



PARIS2015
UN CLIMATE CHANGE CONFERENCE
COP21·CMP11

PATHWAYS TO SUSTAINABLE MOBILITY THROUGH LOCAL, NATIONAL, GLOBAL AND INDUSTRY ACTION

Shifting towards low-carbon mobility needs local, national, global and industry action

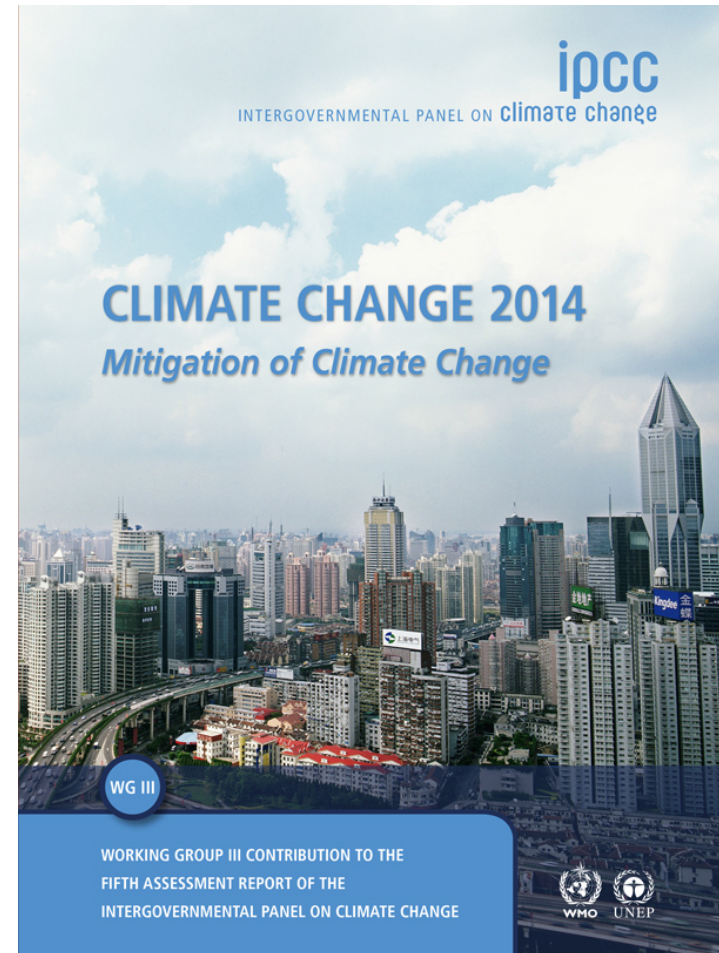
Agenda

- **Transport's contribution to a 2 Degree Pathway**, Oliver Lah, *Project Coordinator, Wuppertal Institute*
- **Transport oriented development in Mexico**, Adriana Lobo, *Director, Embarq Mexico, World Resources Institute*
- **Paris Puzzle**, Rob Siveter, *Senior Manager, Climate Change, International Petroleum Industry Environmental Conservation Association (IPIECA)*
- **State of the World of Fuel Economy**: Sheila Watson, *Executive Secretary, Global Fuel Economy Initiative and Director of Research and Environment, FIA Foundation* & Drew Kojak, *Executive Director, ICCT*
- **Co-benefits potentials of low-carbon Urban mobility**, Glynda Bathan, *Deputy Executive Director, Clean Air Asia*
- **Panel discussion**: Holger Dalkmann, *Director Embarq, WRI*

Key messages from the 5th IPCC Assessment Report

Transport mitigation potential has been found to be higher than previously reported:

- Technical and behavioural mitigation measures for all transport modes, plus new infrastructure and urban redevelopment investments, could reduce final energy demand in 2050 by **around 40%** below the baseline.

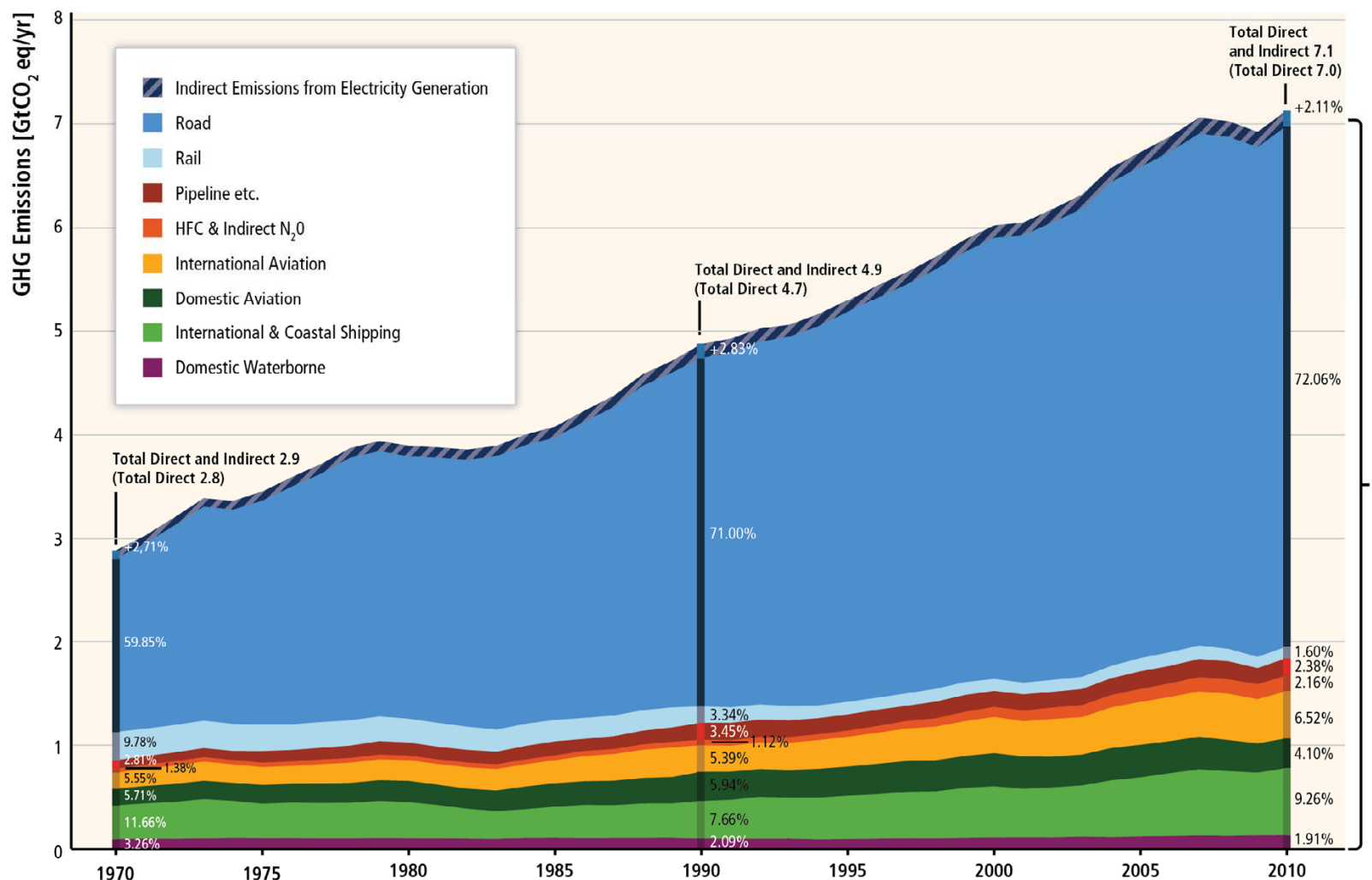


Wuppertal Institute
for Climate, Environment
and Energy



**WORLD
RESOURCES
INSTITUTE**

Passenger and freight activity could outweigh all mitigation measures unless transport emissions can be strongly decoupled from GDP growth

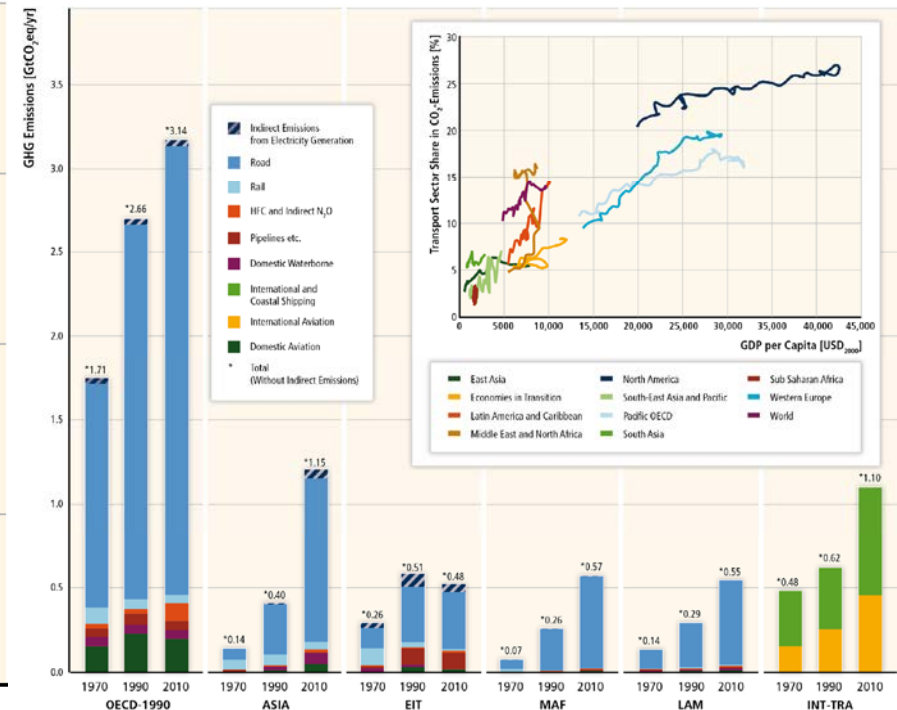
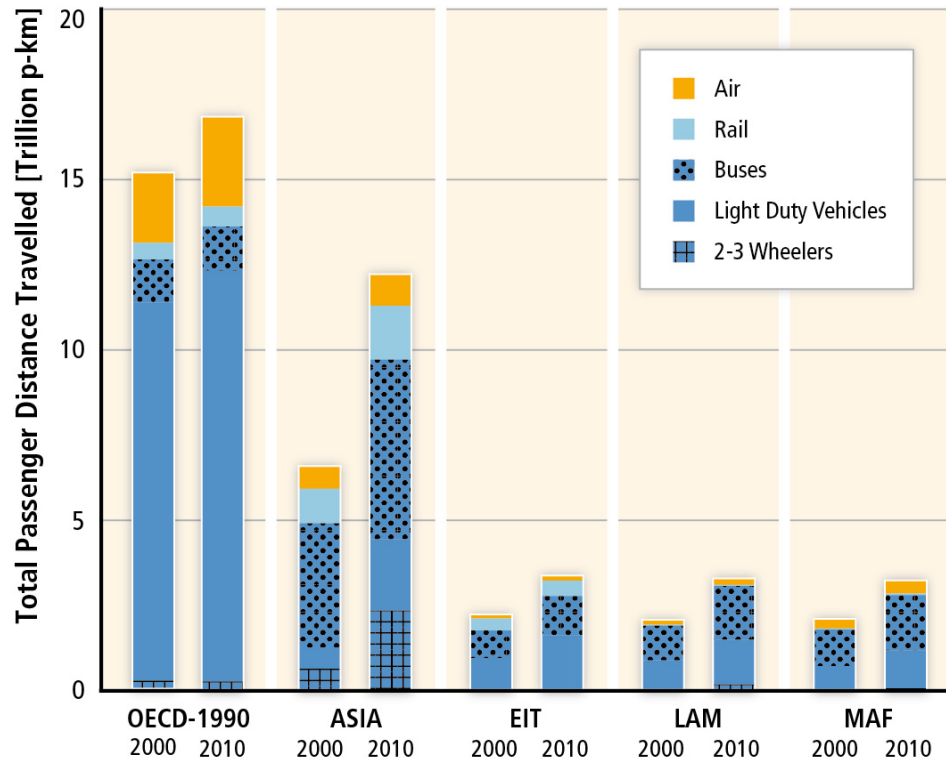


Wuppertal Institute
for Climate, Environment
and Energy



**WORLD
RESOURCES
INSTITUTE**

Barriers to decarbonizing transport for all modes differ across regions



Wuppertal Institute
for Climate, Environment
and Energy



A range of options are readily available to reduce transport GHG emissions

- Both short- and long-term transport mitigation strategies are essential
- Cost effective options are available
- Properly designed policies can generate synergies between various objectives and avoid trade-offs
- Technology (switch) based measures are more likely to generate trade-offs than those focusing on efficiency and conservation



Wuppertal Institute
for Climate, Environment
and Energy



Agenda

- **Transport's contribution to a 2 Degree Pathway**, Oliver Lah, *Project Coordinator, Wuppertal Institute*
- **Transport oriented development in Mexico**, Adriana Lobo, *Director, Embarq Mexico, World Resources Institute*
- **Paris Puzzle**, Rob Siveter, *Senior Manager, Climate Change, International Petroleum Industry Environmental Conservation Association (IPIECA)*
- **State of the World of Fuel Economy**: Sheila Watson, *Executive Secretary, Global Fuel Economy Initiative and Director of Research and Environment, FIA Foundation* & Drew Kojak, *Executive Director, ICCT*
- **Co-benefits potentials of low-carbon Urban mobility**, Glynda Bathan, *Deputy Executive Director, Clean Air Asia*
- **Panel discussion**: Holger Dalkmann, *Director Embarq, WRI*



Wuppertal Institute
for Climate, Environment
and Energy

